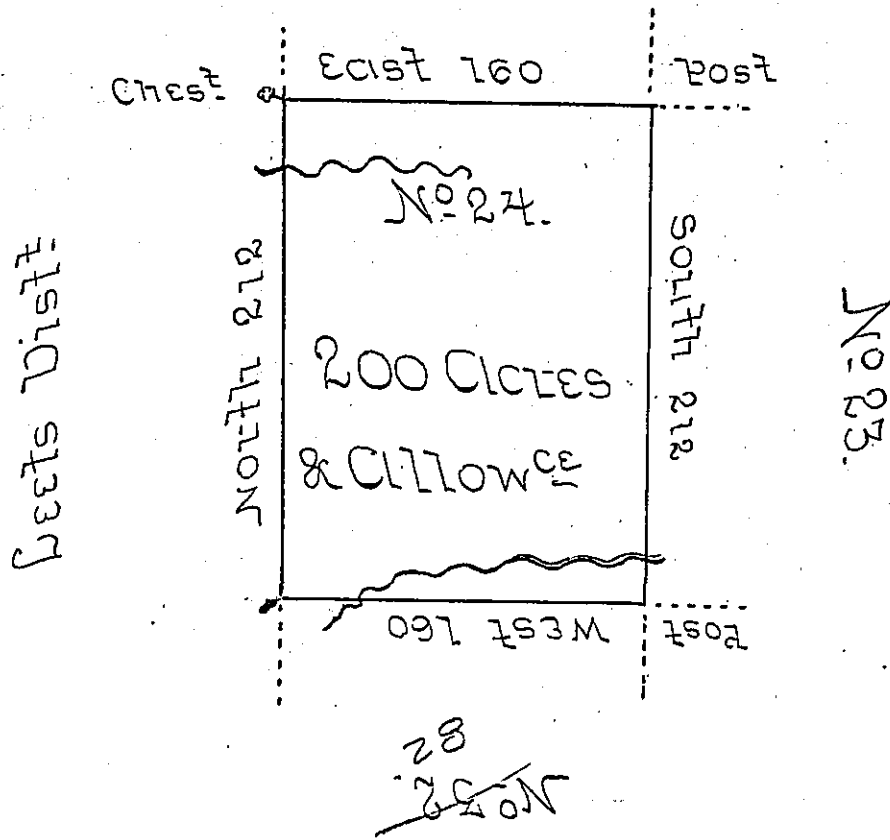


No. 20.



Situate on Waters of Camp Creek Between the fifth & Sixth Parallel in that Part of District No. 3 to me allotted on the North side of the River Ohio being Part of the Land Appropriated for the Purpose of Redeeming and Paying off the Certificates of depreciation &c. Surveyed in the Month of June 1785 Pursuant to Instructions from John Lukens Esquire Surveyor Genl dated at Philad^a the fifth day of March 1785.

N

IN TESTIMONY that the above is a copy of the original remaining on file in the Department of Internal Affairs of Pennsylvania, made conformably to an Act of Assembly approved the 16th day of February, 1833, I have hereunto set my Hand and caused the Seal of said Department to be affixed at Harrisburg, this twenty first day of October 1905.

Spencer
Secretary of Internal Affairs.